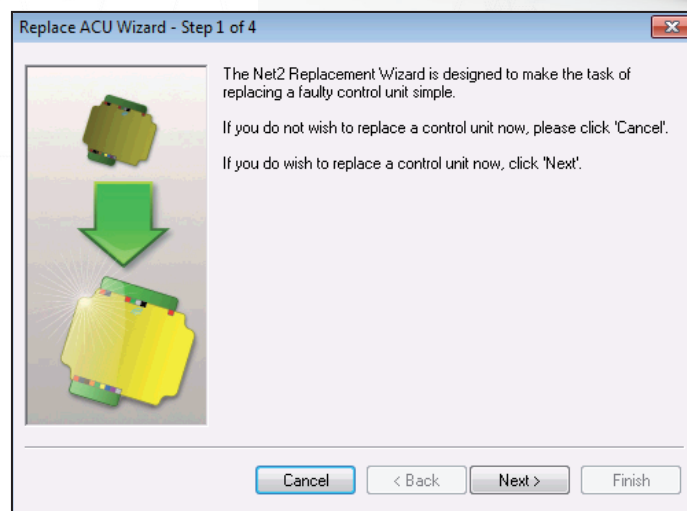
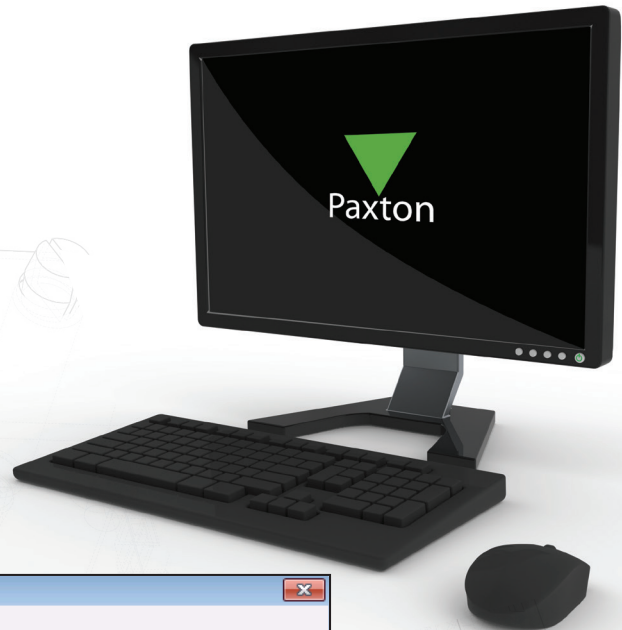


# Replacing a control unit

## Overview

If a Net2 control unit requires replacing with a new unit you need to run the 'Replace' wizard located in the Doors screen.

This wizard copies the relevant settings and user information to the new control unit and then deletes the old one from the system. All the previous user history is also linked to the new unit.



Before replacing the control unit close down the Net2 software application and the Net2 server.

Physically remove the old control unit from the network and wire the new unit in its place. The terminals blocks of the ACU pull off to allow easy changes to be made.

Open the Net2 software application, the new ACU should be automatically detected and the firmware upgraded. If the ACU is not found automatically detect the new ACU by pressing the Detect button in Doors. Ensure that the new ACU has been detected before proceeding.

1. Make sure that you are logged on as 'System Engineer'
2. Start the replace control unit wizard by clicking 'Replace' in the Doors screen. Press Next to continue.
3. Select the OLD control unit to be replaced from the list. Press Next to continue.
4. Select the NEW control unit from the list and press Next to continue.
5. If the details displayed are correct then press Finish to complete the replacement.

The new control unit will inherit the settings from the old unit and the old one will then be deleted from the database.