

Updating to Net2 6.9

The current specification for compatible PC hardware, network and operating systems is available on our website at the following link: - <http://paxton.info/720>

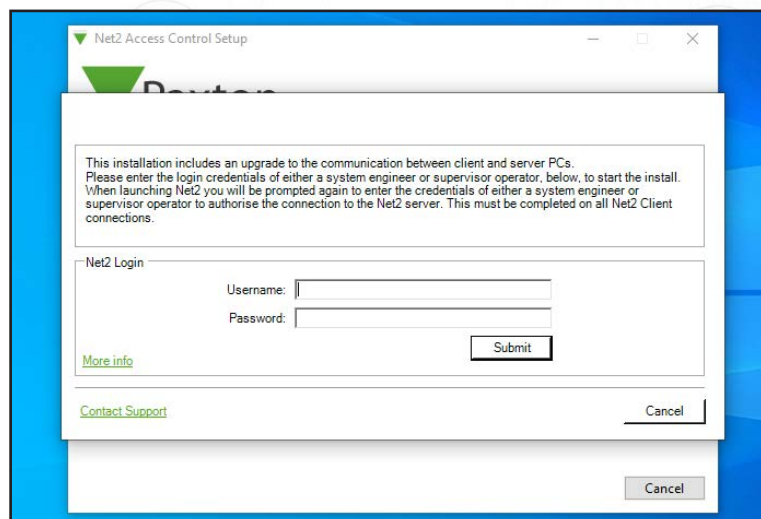
Please be aware that when updating to Net2 6.9, you will be required to enter the credentials of a system engineer or operator.

To ensure your benefit from the latest features and security improvements, always make sure you're using the most up-to-date version of Net2.

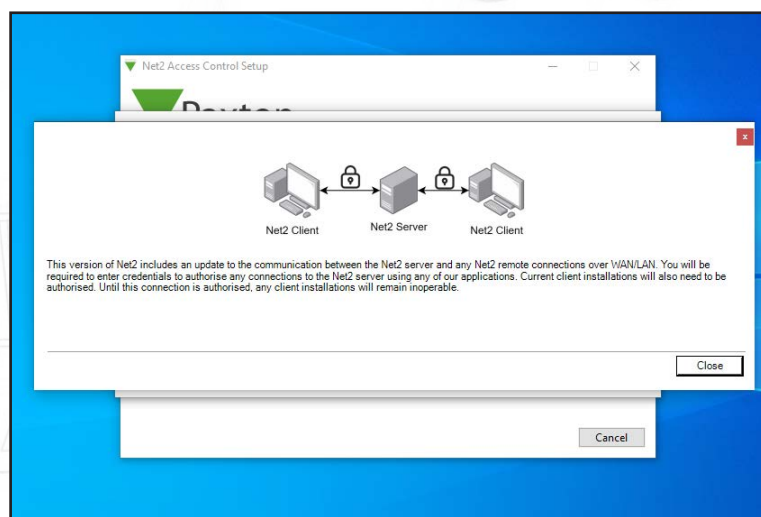


Updating

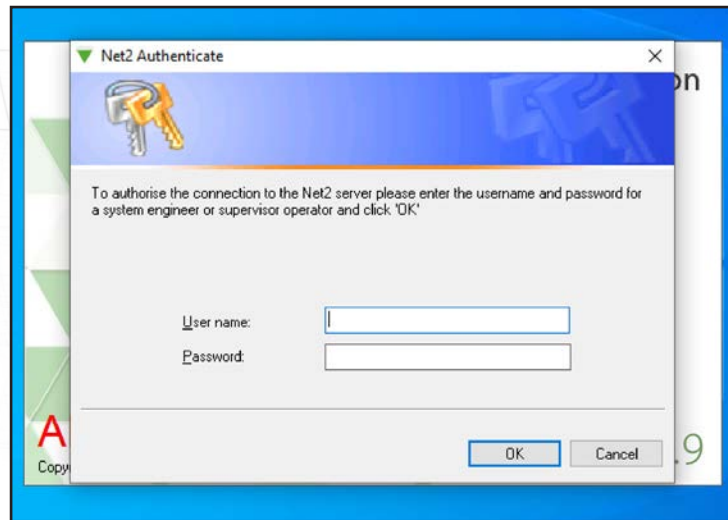
1. When updating to Net2 6.9, the following box will appear



Click more info, if more information is needed



2. Enter the credentials of either a system engineer or supervisor operator
3. The installation will continue
4. Once the installation is complete, you will be prompted to enter the credentials once more



Please note: This process is necessary only when updating to version 6.9 (or higher) from a version below 6.9, or when configuring a new client machine connection. [APN-1075](#)